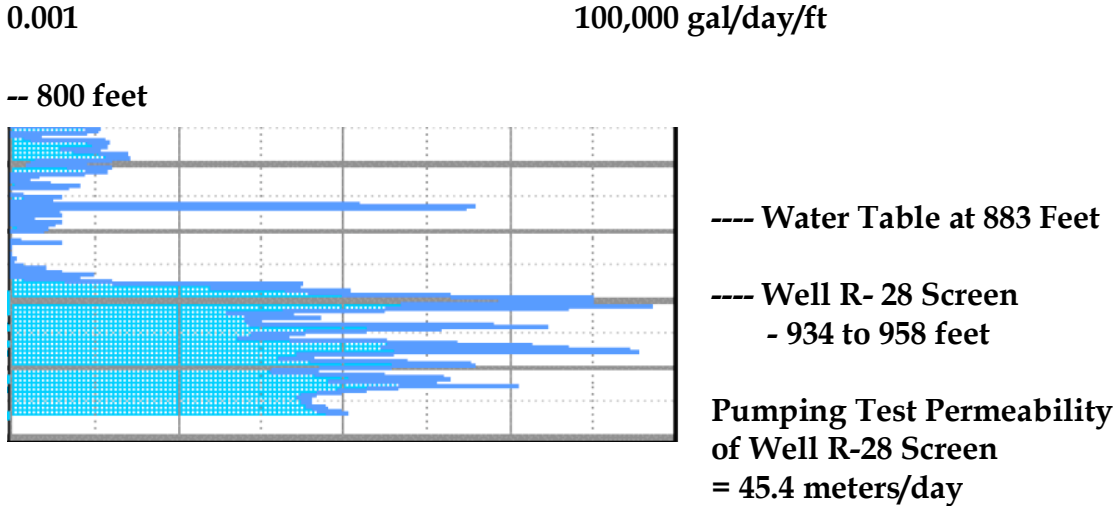
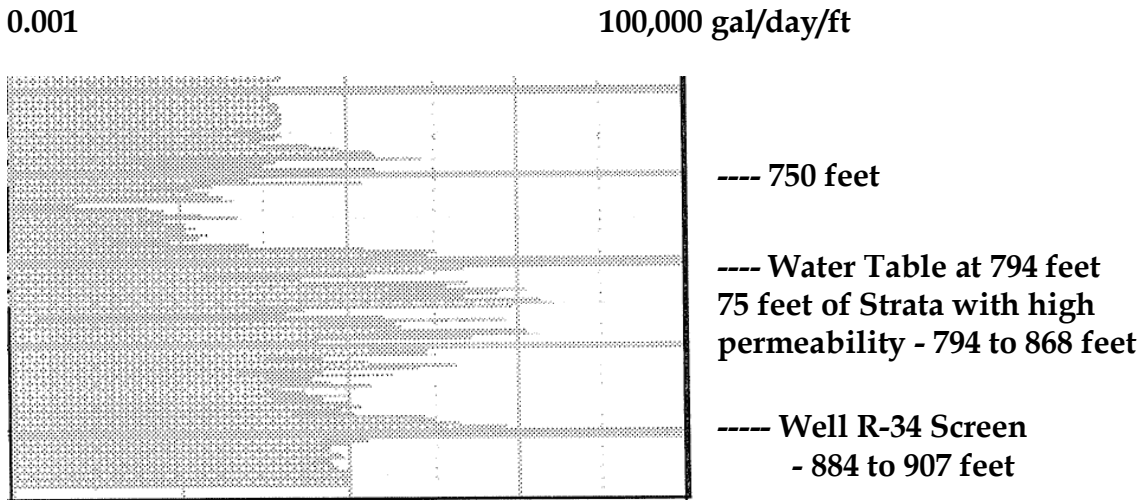


**Figure 1-4.
Schlumberger Permeability Logs for Wells R-28 and R-34**

- **Schlumberger Permeability Log For Well R-28**



- **Schlumberger Permeability Log for Well R-34**



Well R-34 screen installed 90 feet below water table and below 22-ft thick confining bed of clay strata. Strata with high permeability immediately below water table are not monitored.

- Schlumberger Logs show clay strata with very low permeability in depth interval of 868 to 890 feet. The clay strata are across the upper 6 feet of the well screen.
- Because of mistakes, Well R-34 Pumping Test measured a **SPURIOUS** low permeability of 1.1 meters/day. The regional aquifer at well R-34 may have a permeability greater than 40 meters per day.